



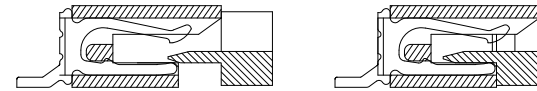
SPECIFICATIONS

Electrical Characteristics:

- 1.1 Voltage rating: 50V AC / DC
- 1.2 Current rating: 0.4A AC / DC
- 1.3 Temperature range: -20°C ~ +60°C

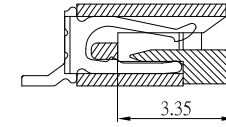
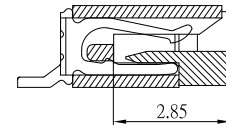
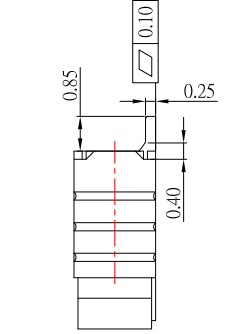
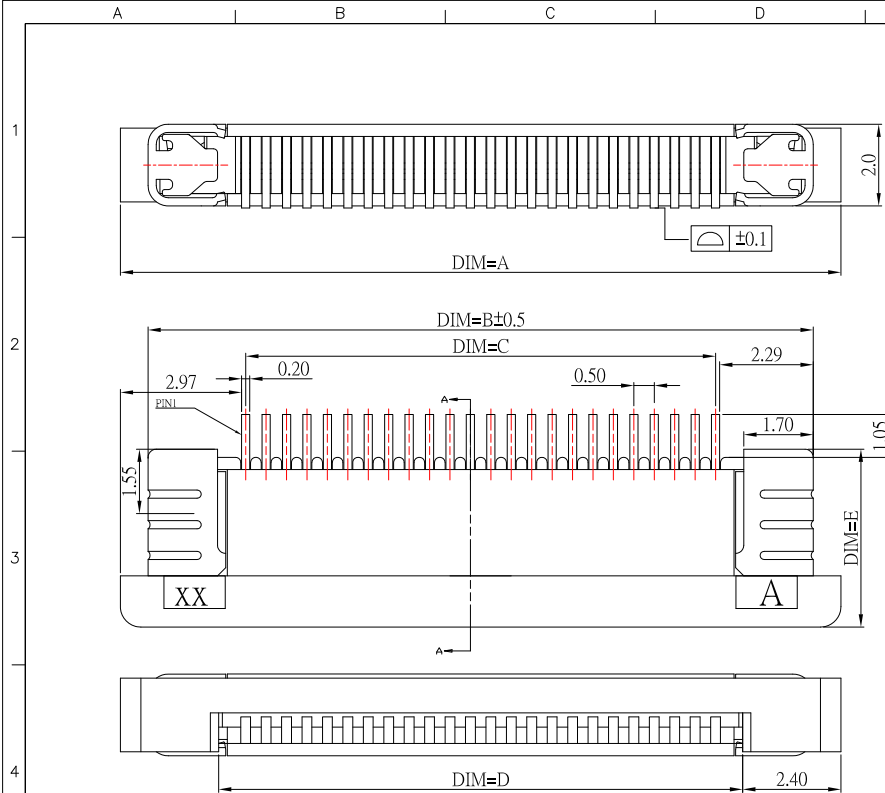
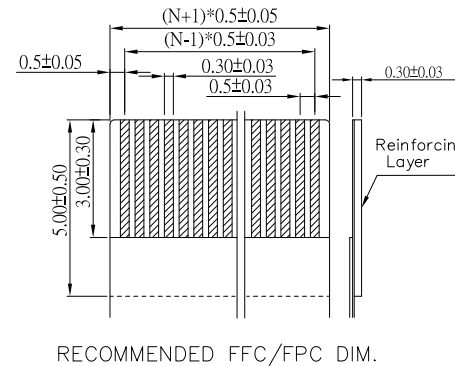
Material:

- 1.1 Housing: LCP,UL94V-0
- 1.2 Cover: LCP,UL94V-0
- 1.3 Contact: Phosphor Bronze,Tin or Gold over Nickel
- 1.4 Fitting Nail: Brass,Tin over Nickel



SECTION A-A

| PIN數 | DIM=A | DIM=B | DIM=C | DIM=D | DIM-E |
|------|-------|-------|-------|-------|-------|
| 60P | 35.6 | 34.5 | 29.5 | 30.6 | |
| 59P | 35.1 | 34.0 | 29.0 | 30.1 | |
| 58P | 34.6 | 33.5 | 28.5 | 29.6 | |
| 57P | 34.1 | 33.0 | 28.0 | 29.1 | |
| 56P | 33.6 | 32.5 | 27.5 | 28.6 | |
| 55P | 33.1 | 32.0 | 27.0 | 28.1 | |
| 54P | 32.6 | 31.5 | 26.5 | 27.6 | |
| 53P | 32.1 | 31.0 | 26.0 | 27.1 | |
| 52P | 31.6 | 30.5 | 25.5 | 26.6 | |
| 51P | 31.1 | 30.0 | 25.0 | 26.1 | |
| 50P | 30.6 | 29.5 | 24.5 | 25.6 | |
| 49P | 30.1 | 29.0 | 24.0 | 25.1 | |
| 48P | 29.6 | 28.5 | 23.5 | 24.6 | |
| 47P | 29.1 | 28.0 | 23.0 | 24.1 | |
| 46P | 28.6 | 27.5 | 22.5 | 23.6 | |
| 45P | 28.1 | 27.0 | 22.0 | 23.1 | |
| 44P | 27.6 | 26.5 | 21.5 | 22.6 | |
| 43P | 27.1 | 26.0 | 21.0 | 22.1 | |
| 42P | 26.6 | 25.5 | 20.5 | 21.6 | |
| 41P | 26.1 | 25.0 | 20.0 | 21.1 | |
| 40P | 25.6 | 24.5 | 19.5 | 20.6 | |
| 39P | 25.1 | 24.0 | 19.0 | 20.1 | |
| 38P | 24.6 | 23.5 | 18.5 | 19.6 | |
| 37P | 24.1 | 23.0 | 18.0 | 19.1 | |
| 36P | 23.6 | 22.5 | 17.5 | 18.6 | |
| 35P | 23.1 | 22.0 | 17.0 | 18.1 | |
| 34P | 22.6 | 21.5 | 16.5 | 17.6 | |
| 33P | 22.1 | 21.0 | 16.0 | 17.1 | |
| 32P | 21.6 | 20.5 | 15.5 | 16.6 | |
| 31P | 21.1 | 20.0 | 15.0 | 16.1 | |
| 30P | 20.6 | 19.5 | 14.5 | 15.6 | |
| 29P | 20.1 | 19.0 | 14.0 | 15.1 | |
| 28P | 19.6 | 18.5 | 13.5 | 14.6 | |
| 27P | 19.1 | 18.0 | 13.0 | 14.1 | |
| 26P | 18.6 | 17.5 | 12.5 | 13.6 | |
| 25P | 18.1 | 17.0 | 12.0 | 13.1 | |
| 24P | 17.6 | 16.5 | 11.5 | 12.6 | |
| 23P | 17.1 | 16.0 | 11.0 | 12.1 | |
| 22P | 16.6 | 15.5 | 10.5 | 11.6 | |
| 21P | 16.1 | 15.0 | 10.0 | 11.1 | |
| 20P | 15.6 | 14.5 | 9.5 | 10.6 | |
| 19P | 15.1 | 14.0 | 9.0 | 10.1 | |
| 18P | 14.6 | 13.5 | 8.5 | 9.6 | |
| 17P | 14.1 | 13.0 | 8.0 | 9.1 | |
| 16P | 13.6 | 12.5 | 7.5 | 8.6 | |
| 15P | 13.1 | 12.0 | 7.0 | 8.1 | |
| 14P | 12.6 | 11.5 | 6.5 | 7.6 | |
| 13P | 12.1 | 11.0 | 6.0 | 7.1 | |
| 12P | 11.6 | 10.5 | 5.5 | 6.6 | |
| 11P | 11.1 | 10.0 | 5.0 | 6.1 | |
| 10P | 10.6 | 9.5 | 4.5 | 5.6 | |
| 9P | 10.1 | 9.0 | 4.0 | 5.1 | |
| 8P | 9.6 | 8.5 | 3.5 | 4.6 | |
| 7P | 9.1 | 8.0 | 3.0 | 4.1 | |
| 6P | 8.6 | 7.5 | 2.5 | 3.6 | |
| 5P | 8.1 | 7.0 | 2.0 | 3.1 | |
| 4P | 7.6 | 6.5 | 1.5 | 2.6 | |



0.5間距4-34P插入深度

0.5間距35-60P插入深度

PCB LAYOUT

| | | | |
|----------|----------------|-------|--------|
| 9 | 更新PCB LAYOUT | Jack | 061020 |
| 8 | 更新圖面 | Jack | 060820 |
| 7 | 更新樣式 | Jack | 112719 |
| 6 | 更新及新增尺寸 | Jack | 071819 |
| 5 | 更新樣式 | Jack | 041119 |
| 4 | 更新FFC | Jack | 082318 |
| 3 | 新增插入深度尺寸 | Jack | 081417 |
| 2 | 更新PCB LAYOUT尺寸 | Jack | 032217 |
| 1 | 更新圖面 | Jack | 080315 |
| ITEM NO. | DESCRIPTION | DRAWN | DATE |

| | | | |
|----|------|------|--------|
| 10 | 更新材質 | Jack | 021022 |
|----|------|------|--------|



TOLERANCE UNLESS OTHERWISE STATED:
 Up to 5 ±0.2
 Above 5 ~ 15 ±0.3
 Above 15 ~ 30 ±0.4
 Above 30 ~ 50 ±0.5
 Angle ±0.3

3RD. ANGEL'S

UNITS MM

| | | | | |
|--------------|----------|-----------|----------|-------------------------|
| DRAWN BY: | DATE | MAT'L | TITLE | CONNECTOR |
| Jack Lu | 02/10/22 | | MODLE | 0.5FPC上接觸式 SMT H:2.00mm |
| CHECKED BY: | DATE | FINISH | DWG NO. | FPC05U-20xx-A-S304 |
| Jacky Chen | 02/10/22 | | PART NO. | FPC05U-20xx-A-S304 |
| APPROVED BY: | DATE | SCALE | 1 : 1 | |
| Tony Kao | 02/10/22 | SHEET NO. | 1 of 1 | |
| | | SIZE | A4 | |
| | | VER | R10 | |